



CVTECH TECHNOLOGY CORPORATION send greetings and best wishes to health.

CVTECH was established in 2017 and started operating strongly in the field of M&E, with a team of engineers, skilled workers, we have participated in large projects implemented such as: Rivera Building Park Thanh Thai (District 10, Ho Chi Minh City, Vietcomreal Apartment (District 5, HCMC), An Binh Hospital (District 5, HCMC), BCONS Mien Dong Building, Suoi Tien (District 9, HCMC)) BCONS Tan Hoa Building, (Di An, Binh Duong), Unile-ver (HCMC), Ocean Gate Building (Nha Trang) Lan Anh Hotel (Nha Trang), Alma Resort Cam Ranh (Bãi Dài, Khánh Hòa)

2018: CVTECH specializes in importing and distributing steel pipes, conduit and valves.

In 2020: CVTECH continues to expand the production of steel pipe fittings products: Elbows, Reducers, Flanges, ...

Besides, CVTECH is increasingly developing in both domestic and international trade, specializing in supplying all kinds of pressure accessories.

We are committed to being a professional partner to bring benefits to your company in the process of cooperation with suitable products, meeting quality standards, best prices, reasonable solutions, fastest time, present nationwide. We believe in the companionship of associates and partners, always aiming to put work first. That certainly brings success to all of us.

Best regards,

I n t r o d u c t i o n





PIPE FITTINGS



PIPES



FLANGES



STUD BOLTS AND GASKETS



VALVES





PIPES



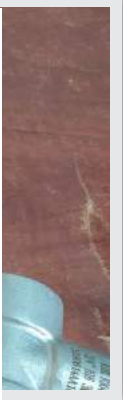
STANDARDS



NOMINAL PIPE SIZE		OUTSIDE DIAMETER			NOMINAL WALL THICKNESS														
A	B	ASME	JIS	DIN	JIS (1)	DIN(2)	SCH10	SCH20	SCH30	STD	SCH40	SCH60	XS	SCH80	SCH100	SCH120	SCH140	SCH160	XXS
15	1/2"	21.3	21.7	21.3	2.8	2.0	2.11	-	2.41	2.77	2.77	-	3.73	3.73				4.78	7.47
20	3/4"	26.7	27.2	26.9	2.8	2.3	2.11	-	2.41	2.87	2.87	-	3.91	3.91	-	-		5.56	7.82
25	1"	33.4	34.0	33.7	3.2	2.6	2.77	-	2.90	3.38	3.38	-	4.55	4.55	-	-		6.35	9.09
32	1.1/4"	42.2	42.7	42.4	3.5	2.6	2.77	-	2.97	3.56	3.56	-	4.85	4.85	-	-		6.35	9.70
40	1.1/2"	48.3	48.6	48.3	3.5	2.6	2.77	-	3.18	3.68	3.68	-	5.08	5.08				7.14	10.15
50	2"	60.3	60.5	60.3	3.8	2.9	2.77	-	3.18	3.91	3.91	-	5.54	5.54				8.74	11.07
65	2.1/2"	73.0	76.3	76.1	4.2	2.9	3.05	-	4.78	5.16	5.16	-	7.01	7.01	-			9.53	14.02
80	3"	88.9	89.1	88.9	42	3.2	3.05	-	4.78	5.49	5.49	-	7.62	7.62				11.13	15.24
100	4"	114.3	114.3	114.3	4.5	3.6	3.05	-	4.78	6.02	6.02	-	8.56	8.56	-	11.13		13.49	17.12
125	5"	141.3	139.8	139.7	4.5	4.0	3.40	-	-	6.55	6.55	-	9.53	9.53	-	12.70		15.88	19.05
150	6"	168.3	165.2	188.3	5.0	4.5	3.40	4.5	-	7.11	7.11	-	10.97	10.97		14.27		18.26	21.95
200	8"	219.1	216.3	219.1	5.8	6.3	3.76	6.35	7.04	8.18	8.18	10.31	12.70	12.70	15.09	18.26	20.62	23.01	22.23
250	10"	273.0	267.4	273.0	6.6	6.3	4.19	6.35	7.80	9.27	9.27	12.70	12.70	15.09	18.26	21.44	25.40	28.58	25.40
300	12"	323.8	318.5	323.9	6.9	7.1	4.57	6.35	8.38	9.53	10.31	14.27	12.70	17.48	21.44	25.40	28.58	33.32	25.40



PIPE FITTINGS



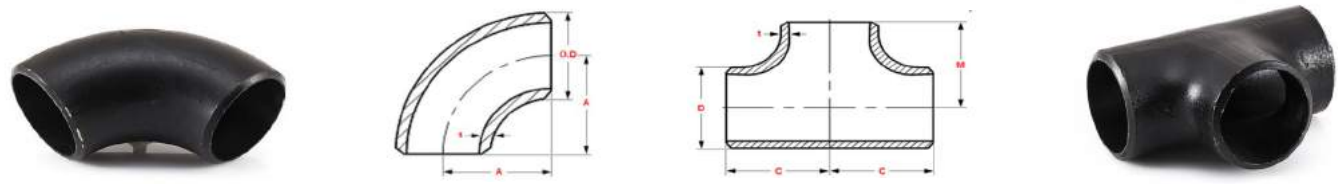
Show Items

ASTM A403 WPS 304, 304L, 316, 316L have the corresponding thickness and weight : SCH5S, SCH10S, SCH40S, SCH80S...

ASTM A234 WPB have the corresponding thickness and weight: SCH20, STD, SCH40, XS, SCH80, SCH120, SCH160, XXS...

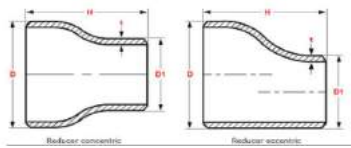


Butt-Weld 90 LR Elbow, Equal Tee accordance to ASME B16.9 Specification



Size		O.D (mm)	Dimension A (mm)	Schedule (SCH)	Wall Thickness t (mm)	Weight (kg)	Size		Outside Dia. D (mm)	Dimension C = M (mm)	Schedule (SCH)	Wall Thickness t (mm)	Weight (kg)
NPS	Inch						NPS	Inch					
DN15	1/2"	Ø21.3	38	5S	1.65	0.05	DN15	1/2"	Ø21.3	25	5S	1.65	0.05
				10S	2.11	0.06					10S	2.11	0.06
				40S/STD/40	2.77	0.08					40S/STD/40	2.77	0.08
				80S/XS/80	3.73	0.1					80S/XS/80	3.73	0.1
				160	4.78	0.11					160	4.78	0.12
				XXS	7.47	0.15					XXS	7.47	0.16
DN20	3/4"	Ø26.7	38	5S	1.65	0.06	DN20	3/4"	Ø26.7	29	5S	1.65	0.08
				10S	2.11	0.08					10S	2.11	0.09
				40S/STD/40	2.87	0.1					40S/STD/40	2.87	0.13
				80S/XS/80	3.91	0.13					80S/XS/80	3.91	0.16
				160	5.56	0.17					160	5.56	0.21
				XXS	7.82	0.22					XXS	7.82	0.27
DN25	1"	Ø33.4	38	5S	1.65	0.08	DN25	1"	Ø33.4	38	5S	1.65	0.13
				10S	2.77	0.13					10S	2.77	0.21
				40S/STD/40	3.38	0.15					40S/STD/40	3.38	0.24
				80S/XS/80	4.55	0.19					80S/XS/80	4.55	0.31
				160	6.35	0.25					160	6.35	0.41
				XXS	9.09	0.33					XXS	9.09	0.53
DN32	1-1/4"	Ø42.2	48	5S	1.65	0.12	DN32	1-1/4"	Ø42.2	48	5S	1.65	0.2
				10S	2.77	0.21					10S	2.77	0.33
				40S/STD/40	3.56	0.26					40S/STD/40	3.56	0.42
				80S/XS/80	4.85	0.34					80S/XS/80	4.85	0.55
				160	6.35	0.43					160	6.35	0.69
				XXS	9.7	0.59					XXS	9.7	0.96
DN40	1-1/2"	Ø48.3	57	5S	1.65	0.17	DN40	1-1/2"	Ø48.3	57	5S	1.65	0.28
				10S	2.77	0.28					10S	2.77	0.46
				40S/STD/40	3.68	0.36					40S/STD/40	3.68	0.6
				80S/XS/80	5.08	0.49					80S/XS/80	5.08	0.8
				160	7.14	0.65					160	7.14	1.06
				XXS	10.15	0.86					XXS	10.15	1.41
DN50	2"	Ø60.3	76	5S	1.65	0.28	DN50	2"	Ø60.3	64	5S	1.65	0.39
				10S	2.77	0.47					10S	2.77	0.64
				40S/STD/40	3.91	0.65					40S/STD/40	3.91	0.88
				80S/XS/80	5.54	0.89					80S/XS/80	5.54	1.2
				160	8.74	1.32					160	8.74	1.79
				XXS	11.07	1.61					XXS	11.07	2.18
DN65	2-1/2"	Ø73.0	95	5S	2.11	0.55	DN65	2-1/2"	Ø73.0	76	5S	2.11	0.7
				10S	3.05	0.77					10S	3.05	0.99
				40S/STD/40	5.16	1.3					40S/STD/40	5.16	1.66
				80S/XS/80	7.01	1.7					80S/XS/80	7.01	2.18
				160	9.53	2.22					160	9.53	2.85
				XXS	14.02	3.04					XXS	14.02	3.9
DN80	3"	Ø88.9	114	5S	2.11	0.8	DN80	3"	Ø88.9	86	5S	2.11	0.96
				10S	3.05	1.14					10S	3.05	1.36
				40S/STD/40	5.49	2.02					40S/STD/40	5.49	2.42
				80S/XS/80	7.62	2.73					80S/XS/80	7.62	3.25
				160	11.13	3.81					160	11.13	4.55
				XXS	15.24	4.94					XXS	15.24	5.9

Butt-Weld Con/Ecc Reducer accordance to ASME B16.9 Specification



Size	Outside Dia. D (mm)	Outside Dia. D1 (mm)	Dimension H (mm)	Schedule (SCH)	Wall Thk. t (mm)	Weight (kg)
NPS						
DN20x15	Ø26.7	Ø21.3	38	10S	2.11	0.04
				40S/STD/40	2.87	0.06
				80S/XS/80	3.91	0.07
DN25x20	Ø33.4	Ø26.7	51	10S	2.77	0.1
				40S/STD/40	3.38	0.11
				80S/XS/80	4.55	0.14
DN25x15	Ø33.4	Ø21.3	51	10S	2.77	0.09
				40S/STD/40	3.38	0.1
				80S/XS/80	4.55	0.12
DN32x25	Ø42.2	Ø33.4	51	10S	2.77	0.12
				40S/STD/40	3.56	0.15
				80S/XS/80	4.85	0.2
DN32x20	Ø42.2	Ø26.7	51	10S	2.77	0.1
				40S/STD/40	3.56	0.13
				80S/XS/80	4.85	0.17
DN32x15	Ø42.2	Ø21.3	51	10S	2.77	0.09
				40S/STD/40	3.56	0.12
				80S/XS/80	4.85	0.16
DN40x32	Ø48.3	Ø42.2	64	10S	2.77	0.19
				40S/STD/40	3.68	0.24
				80S/XS/80	5.08	0.32
DN40x25	Ø48.3	Ø33.4	64	10S	2.77	0.17
				40S/STD/40	3.68	0.21
				80S/XS/80	5.08	0.28
DN40x20	Ø48.3	Ø26.7	64	10S	2.77	0.14
				40S/STD/40	3.68	0.18
				80S/XS/80	5.08	0.24
DN50x40	Ø60.3	Ø48.3	76	10S	2.77	0.27
				40S/STD/40	3.91	0.36
				80S/XS/80	5.54	0.49
DN50x32	Ø60.3	Ø42.2	76	10S	2.77	0.25
				40S/STD/40	3.91	0.34
				80S/XS/80	5.54	0.45
DN50x25	Ø60.3	Ø33.4	76	10S	2.77	0.23
				40S/STD/40	3.91	0.3
				80S/XS/80	5.54	0.4
DN65x50	Ø73.0	Ø60.3	89	10S	3.05	0.41
				40S/STD/40	5.16	0.63
				80S/XS/80	7.01	0.84
DN65x40	Ø73.0	Ø48.3	89	10S	3.05	0.37
				40S/STD/40	5.16	0.57
				80S/XS/80	7.01	0.75
DN65x32	Ø73.0	Ø42.2	89	10S	3.05	0.35
				40S/STD/40	5.16	0.54
				80S/XS/80	7.01	0.71
DN80x65	Ø88.9	Ø73.0	89	10S	3.05	0.51
				40S/STD/40	5.49	0.89
				80S/XS/80	7.62	1.19
DN80x50	Ø88.9	Ø60.3	89	10S	3.05	0.46
				40S/STD/40	5.49	0.74
				80S/XS/80	7.62	1.01
DN80x40	Ø88.9	Ø48.3	89	10S	3.05	0.42
				40S/STD/40	5.49	0.68
				80S/XS/80	7.62	0.92
<div>• Connection Type: Butt-weld end</div> <div>• Standard: ASME/ ANSI B16.9, JIS,</div> <div>• Material: A234, SS304, SS316,...</div> <div>• Thickness (SCH): 5S, 10S, STD/40, 40S, XS/80, 80S, 120, 160, XXS,...</div> <div>• Size: 1/2" - 24"</div> <div>• Origin: Vietnam, China, Taiwan, Korea, Malaysia, Thailand, G7</div>						

Size	Outside Dia. D (mm)	Outside Dia. D1 (mm)	Dimension H (mm)	Schedule (SCH)	Wall Thk. t (mm)	Weight (kg)
NPS						
DN100x80	Ø114.3	Ø88.9	102	10S	3.05	0.74
				40S/STD/40	6.02	1.39
				80S/XS/80	8.56	1.92
DN100x65	Ø114.3	Ø73.0	10	10S	3.05	0.68
				40S/STD/40	6.02	1.26
				80S/XS/80	8.56	1.72
DN100x50	Ø114.3	Ø60.3	102	10S	3.05	0.62
				40S/STD/40	6.02	1.09
				80S/XS/80	8.56	1.52
DN125x100	Ø141.3	Ø114.3	127	10S	3.4	1.26
				40S/STD/40	6.55	2.41
				80S/XS/80	9.53	3.38
DN125x80	Ø141.3	Ø88.9	127	10S	3.4	1.14
				40S/STD/40	6.55	2.11
				80S/XS/80	9.53	2.93
DN125x65	Ø141.3	Ø73.0	127	10S	3.4	1.06
				40S/STD/40	6.55	1.94
				80S/XS/80	9.53	2.68
DN150X125	Ø168.3	Ø141.3	140	10S	3.4	1.78
				40S/STD/40	7.11	3.51
				80S/XS/80	10.97	5.15
DN150X100	Ø168.3	Ø114.3	140	10S	3.4	1.54
				40S/STD/40	7.11	3.1
				80S/XS/80	10.97	4.56
DN150X80	Ø168.3	Ø88.9	140	10S	3.4	1.41
				40S/STD/40	7.11	2.77
				80S/XS/80	10.97	4.05
DN200x150	Ø219.1	Ø168.3	152	10S	3.76	2.58
				40S/STD/40	8.18	5.39
				80S/XS/80	12.7	8.16
DN200x125	Ø219.1	Ø141.3	152	10S	3.76	2.41
				40S/STD/40	8.18	4.91
				80S/XS/80	12.7	7.26
DN200x100	Ø219.1	Ø114.3	152	10S	3.76	2.16
				40S/STD/40	8.18	4.46
				80S/XS/80	12.7	6.62
DN250x200	Ø273.1	Ø219.1	178	10S	4.19	4.27
				20	6.35	6.73
				40S/STD/40	9.27	9.18
DN250x150	Ø273.1	Ø168.3	178	10S	4.19	3.71
				40S/STD/40	9.27	7.9
DN250x125	Ø273.1	Ø141.3	178	10S	4.19	3.51
				40S/STD/40	9.27	7.34
DN300x250	Ø323.9	Ø273.1	203	10S	4.57	6.5
				20	6.35	9.36
				STD	9.53	13.62
DN300x200	Ø323.9	Ø219.1	203	40	10.31	14.23
				10S	4.57	5.72
				20	6.35	8.49
DN300x150	Ø323.9	Ø168.3	203	STD	9.53	11.8
				40	10.31	12.41
				10S	4.57	5.08
DN300x100	Ø323.9	Ø168.3	203	STD	9.53	10.34
				40	10.31	10.95
				10S	4.57	5.08

FORGED HIGH PRESSURE PIPE FITTINGS

SW



45 ELBOW



90 ELBOW



FULL COUPLING



HALF COUPLING



ROUND CAP



SOCKELET



UNION



BOSS



EQUAL TEE



REDUCING TEE



REDUCING COUPLING



REDUCER INSERT



LONG NIPPLE

BW



WELDOLETS



CON. SWAGE NIPPLE



ECC. SWAGE NIPPLE

NPT



90 ELBOW



HEXAGON PLUG



45 ELBOW



EQUAL TEE



REDUCING TEE



REDUCING COUPLING



CONCENTRIC SWAGE NIPPLE



ECCENTRIC SWAGE NIPPLE



HALF COUPLING



THREDOLETS



BOSS



FULL COUPLING



ROUND CAP



SQUARE PLUG



LONG NIPPLE



HEXAGON BUSHING



HEXAGON REDUCING NIPPLE



HEXAGON NIPPLE



UNION



M/F UNION

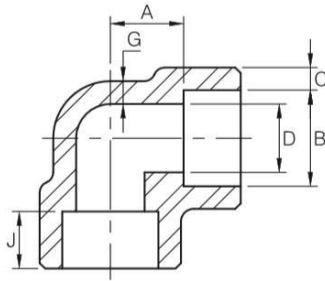
PRODUCTS INFORMATION

- **Items:** Elbow, Tee, Coupling, Half Coupling, Cap, Plug, Bushing, Dnion, Outlet, Swage Nipple, Bull Plug, Reducer Insert And Hex. Nipple, Steet Elbows, Boss....Etc.
- **Connection:** Socket-Weld, Threaded (Npt, Pt, And Bsp (Iso7-1, Iso228-1)), Butt-Welding.
- **Size:** NPS 1/8" ~ 4". DN 6~100
- **Rating Pressure:** Threaded End - 2000 / 3000 / 6000 LBS. Socket-Weld End - 3000 /Z 6000 /Z 9000 LBS. Butt Weld End - SCH40 /SCH80 / SCH160 /XXS.
- **Specificaltions:** ASME B16.11-2011(REVISION of ASME B16. 11-2009) — MSS SP- 79, 83, 95, 97 and BS3799. W B. MATERIAL SPEC: ASTM A105, A350 LF2, A106, A312, A234, A403. ASTM A182 (F304, F304L, F316, F316L, F304H, F316H, F317L, F321, F5, F9, F11, F22, F44, F51/60, F53, F91).
- **Origin:** Vietnam, China,Taiwan, Korea, Malaysia, Thailand, G7.



90° ELBOW

ASME B16.11-2011 (Revision of ASME B16.11-2009)



Dimensions are in millimeters

Socket Welding							
DN	Nom. Pipe Size	B	C		D	A	G
			(Avg)	(Min)			

3000Lb

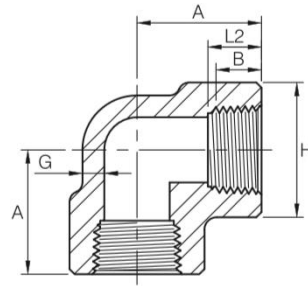
6	1/8	10.8	3.18	3.18	6.9	11.0	2.41	9.5
8	1/4	14.2	3.78	3.30	9.3	11.0	3.02	9.5
10	3/8	17.6	4.01	3.50	12.6	13.5	3.20	9.5
15	1/2	21.8	4.67	4.09	15.8	15.5	3.73	9.5
20	3/4	27.2	4.90	4.27	21.0	19.0	3.91	12.5
25	1	33.9	5.69	4.98	26.7	22.5	4.55	12.5
32	1-1/4	42.7	6.07	5.28	35.1	27.0	4.85	12.5
40	1-1/2	48.8	6.35	5.54	40.9	32.0	5.08	12.5
50	2	61.2	6.93	6.04	52.5	38.0	5.54	16.0
65	2-1/2	73.9	8.76	7.67	62.7	41.0	7.01	16.0
80	3	89.8	9.52	8.30	78.0	57.0	7.62	16.0
100	4	115.2	10.69	9.35	102.3	66.5	8.56	19.0

6000Lb

6	1/8	10.8	3.96	3.43	4.0	11.0	3.15	9.5
8	1/4	14.2	4.60	4.01	6.4	13.5	3.68	9.5
10	3/8	17.6	5.03	4.37	9.2	15.5	4.01	9.5
15	1/2	21.8	5.97	5.18	11.8	19.0	4.78	9.5
20	3/4	27.2	6.96	6.04	15.6	22.5	5.56	12.5
25	1	33.9	7.92	6.93	20.7	27.0	6.35	12.5
32	1-1/4	42.7	7.92	6.93	29.5	32.0	6.35	12.5
40	1-1/2	48.8	8.92	7.80	34.0	38.0	7.14	12.5
50	2	61.2	10.92	9.50	42.9	41.0	8.74	16.0

9000Lb

15	1/2	21.8	9.35	8.18	6.4	25.5	7.47	9.5
20	3/4	27.2	9.78	8.56	11.1	28.5	7.82	12.5
25	1	33.9	11.38	9.96	15.2	32.0	9.09	12.5
32	1-1/4	42.7	12.14	10.62	22.8	35.0	9.70	12.5
40	1-1/2	48.8	12.70	11.12	28.0	38.0	10.15	12.5
50	2	61.2	13.84	12.12	38.2	54.0	11.07	16.0



Dimensions are in millimeters

Threaded						
DN	Nom. Pipe Size	Length of Thread. (Min)		A	G (Min)	H
		B	L2			

2000Lb

6	1/8	6.4	6.7	21	3.18	22
8	1/4	8.1	10.2	21	3.18	22
10	3/8	9.1	10.4	25	3.18	25
15	1/2	10.9	13.6	28	3.18	33
20	3/4	12.7	13.9	33	3.18	38
25	1	14.7	17.3	38	3.68	46
32	1-1/4	17.0	18.0	44	3.89	56
40	1-1/2	17.8	18.4	51	4.01	62
50	2	19.0	19.2	60	4.27	75
65	2-1/2	23.6	28.9	76	5.61	92
80	3	25.9	30.5	86	5.99	109
100	4	27.7	33.0	106	6.55	146

3000Lb

6	1/8	6.4	6.7	21	3.18	22
8	1/4	8.1	10.2	25	3.30	25
10	3/8	9.1	10.4	28	3.51	33
15	1/2	10.9	13.6	33	4.09	38
20	3/4	12.7	13.9	38	4.32	46
25	1	14.7	17.3	44	4.98	56
32	1-1/4	17.0	18.0	51	5.28	62
40	1-1/2	17.8	18.4	60	5.56	75
50	2	19.0	19.2	64	7.14	84
65	2-1/2	23.6	28.9	83	7.65	102
80	3	25.9	30.5	95	8.84	121
100	4	27.7	33.0	114	11.18	152

6000Lb

6	1/8	6.4	6.7	25	6.35	25
8	1/4	8.1	10.2	28	6.60	33
10	3/8	9.1	10.4	33	6.98	38
15	1/2	10.9	13.6	38	8.15	46
20	3/4	12.7	13.9	44	8.53	56
25	1	14.7	17.3	51	9.93	62
32	1-1/4	17.0	18.0	60	10.59	75
40	1-1/2	17.8	18.4	64	11.07	84
50	2	19.0	19.2	83	12.09	102
65	2-1/2	23.6	28.9	95	15.29	121
80	3	25.9	30.5	106	16.64	146
100	4	27.7	33.0	114	18.67	152

FLANGES



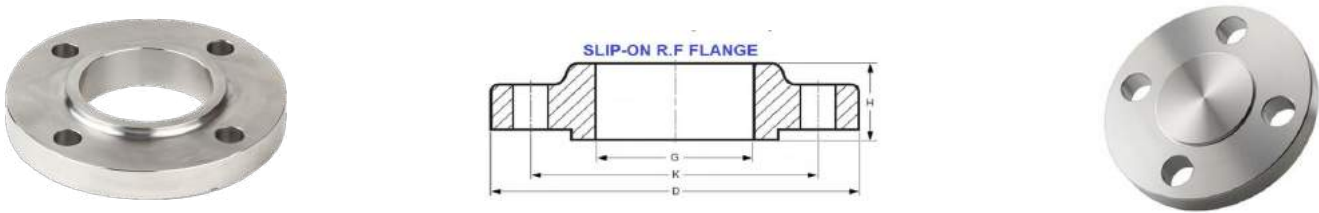
Size: 1/2 inch ~ 48 inch

- **Material:** Carbon Steel: ASTM A105, A181, A350 LF1, A350LF2, A350LF3, A36, Q235B...
- **Stainless Steel:** ASTM A182 F304, F304L, F316, F316L, F321 etc
- **Connection Type:** Slip On (SO), Plate (SOP), Welding Neck (WN), Blind (BL), Threaded (NPT), Socket Weld (SW), Ring joint (RJ), Lap Joint (LJ)
- **Working pressure:** CL150, CL300, CL600,...
- **Surface:** FF, RF
- **Origin:** Vietnam, China, Taiwan, Korea, Malaysia, Thailand, G7





Slip On R.F Flange, Blind Flange accordance to ANSI/ASME B16.5 Specification



Size		Rate/ Class	Outside Dia. D (mm)	Bolts Circle Dia. K (mm)	Inside Dia. G (mm)	Hight H (mm)	No. of Bolt Hole	Weight (kg/ea) (SO)	Weight (kg/ea) (BL)
DN	inch								
15	1/2"	150	88.9	60.4	22.3	15.7	4	0.4	0.4
		300	95.2	66.5	22.3	22.3	4	0.7	0.7
		400							
		600	95.2	66.5	22.3	22.3	4	0.8	0.7
		900							
		1500	120.6	82.5	22.3	31.7	4	1.7	1.8
20	3/4"	150	98.5	69.8	27.6	15.7	4	0.7	0.7
		300	117.3	82.5	27.6	25.4	4	1.1	1.2
		400							
		600	117.3	82.5	27.6	25.4	4	1.4	1.2
		900							
		1500	130	88.9	27.6	35	4	2.3	2.4
25	1"	150	107.9	79.2	34.5	17.5	4	0.8	0.9
		300	123.9	88.9	34.5	26.9	4	1.4	1.5
		400							
		600	123.9	88.9	34.5	26.9	4	1.6	1.5
		900							
		1500	149.3	101.6	34.5	41.1	4	3.4	3.6
32	1-1/4"	150	117.3	88.9	43.1	20.5	4	1.1	1.3
		300	133.3	98.5	45.1	26.9	4	1.8	2.0
		400							
		600	133.1	98.5	45.1	28.4	4	2.1	2.0
		900							
		1500	158.7	111.2	43.1	41.1	4	3.9	4.1
40	1-1/2"	150	127	98.5	49.5	22.3	4	1.4	1.6
		300	155.4	114.3	49.5	30.2	4	2.6	2.9
		400							
		600	155.4	114.3	49.5	31.7	4	3.1	3.2
		900							
		1500	177.8	123.9	49.5	44.4	4	5.4	5.8
50	2"	150	152.4	120.6	61.9	25.4	4	2.2	2.6
		300	165.1	127	61.9	33.2	8	3.4	3.4
		400							
		600	165.1	127	61.9	36.5	8	3.7	4.3
		900							
		1500	215.9	165.1	61.9	57.1	8	9.8	10.1
65	2-1/2"	150	177.8	139.7	74.6	28.4	4	3.6	4.1
		300	190.5	149.3	74.6	38.1	8	4.4	5.1
		400							
		600	190.5	149.3	74.6	41.1	8	5.4	6.0
		900							
		1500	244.3	190.5	74.6	63.5	8	13.7	14.0
80	3"	150	190.5	152.4	90.6	30.2	4	4.1	5.0
		300	209.5	168.1	90.6	42.9	8	6.1	7.0
		400							
		600	209.5	168.1	90.6	45.9	8	7.3	8.0
		900	241.3	190.5	90.6	53.8	8	11.6	13.1
		1500	266.7	203.2			8	18	19
100	4"	150	228.6	190.5	116	33.2	8	5.6	7.1
		300	254	200.1	116	47.7	8	10.1	11.8
		400	254	200.1	116	50.8	6	11.5	14.0
		600	273	215.9	116	53.8	8	15.8	18.0
		900	292.1	234.9	116	69.8	8	19.8	22.1
		1500	311.1	241.3			8	27.8	30.0
125	5"	150	254	215.9	143.7	36.5	8	6.3	9.0
		300	279.4	234.9	143.7	50.8	8	12.5	15.5
		400	279.4	234.9	143.7	53.8	8	14.5	19.0
		600	330.2	266.7	143.7	60.4	8	24.5	28.5
		900	349.2	279.4	143.7	79.2	8	32	36.5
		1500	374.6	292.1			8	52	58.0
150	6"	150	279.4	241.3	170.6	39.6	8	7.5	11.8
		300	317.5	269.7	170.6	52.3	12	14.1	21.3
		400	317.5	269.7	170.6	57.1	12	19	26.0
		600	355.6	292.1	170.6	66.5	12	29.5	35.5
		900	381	317.5	170.6	85.6	12	41.2	47.4
		1500	393.7	317.5			12	61	72.0
200	8"	150	342.9	298.4	221.4	44.4	8	12.6	21.0
		300	381	330.2	221.4	61.9	12	24.6	35.2
		400	381	330.2	221.4	68.3	12	29	43.0
		600	419.1	349.2	221.4	76.2	12	43	58.0
		900	469.9	393.7	221.4	101.6	12	78	82.5
		1500	482.6	393.7			12	104	122.0
250	10"	150	406.4	361.9	276.3	49.2	12	18.5	30.0
		300	444.5	387.3	276.3	66.5	16	37.1	57.0
		400	444.5	387.3	276.3	73.1	16	39.5	65.0
		600	508	431.8	276.3	65.8	16	70	98.0
		900	546.1	469.9	276.3	107.9	16	110	123.0
		1500	584.2	482.6			12	175	210.0
300	12"	150	482.6	431.8	327.1	55.6	12	28	45.0
		300	520.7	450.8	327.1	73.1	16	50	82.0
		400	520.7	450.8	327.1	7g.2	16	58	95.0
		600	558.8	488.9	327.1	91.9	20	86	125.0
		900	609.6	533.4	327.1	117.3	20	149	174.0
		1500	673.1	571.5			16	264	315.0

HYDRAULIC SYSTEM

Material: CS/AISI 304/316/316Ti

Standard: DIN/ISO/SAE

Origin: G7

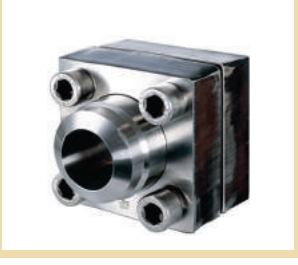
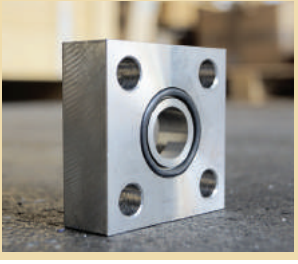
PRECISION
TUBE



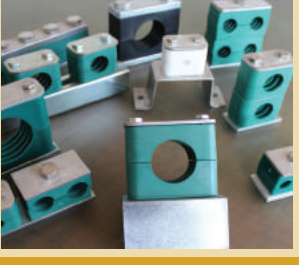
TUBE
FITTINGS



FLANGES



VALVES



CLAMPS



VALVES



CASTING VALVES FLANGE ENDS



Size	2" ~ 24"
Material	ASTM A216 Gr WCB ASTM A351 Gr CF8/CF8M,...
Connection Type	RF/FF FLANGE
Working pressure	ANSI CL150/300/600/ 900/1500
Original	Vietnam, China, Taiwan, Korea, Malaysia, Thailand, G7

FORGING VALVES



Size	1/2" ~ 2"
Material	ASTM A/SA 105/105N ASTM A182 F304/316...
Connection Type	SW, NPT, BW
Working pressure	CL600/800/1500/2500
Original	Vietnam, China, Taiwan, Korea, Malaysia, Thailand, G7

STUD BOLTS AND NUTS



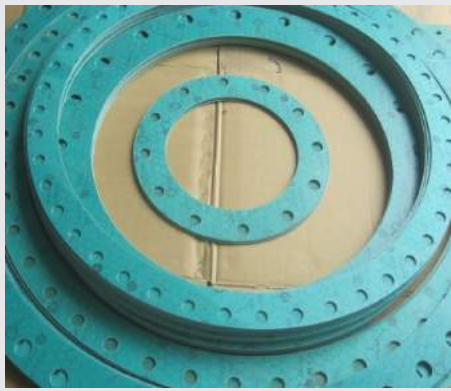
+ Stub Bolts: ASTM A193 GR B7/ B8/ B8M,...

+ Nuts: ASTM A194 GR 2H/ 8/ 8m,...

+ Washers: F436/ SS304/ SS316

Origin: Vietnam, China, Taiwan, Korea, Malaysia, Thailand, G7

GASKETS



- SPIRAL WOUND

- + Standard: ASME B16.20
- + Material: GRAPHITE FILL CS/ SS304/ SS316...

- FLAT RING

- + Standard: ASME B16.21 FF/RF
- + Material: RUBBER/ NON - ASBESTOS/ PTFE

- RING JOINT

- + Standard: ASME B16.20/ API 6A
- + Material: SOFT IRON/ CS/ ALLOY F5/ SUS 304/316...

Working pressure: ANSI CL150/ 300/ 600/ 900/ 1500

Origin: Vietnam, China, Taiwan, Korea, Malaysia, Thailand, G7



CÔNG TY CỔ PHẦN CÔNG NGHỆ CVTECH
CVTECH TECHNOLOGY CORPORATION

Trụ sở : 135/9 Tổ 14, KP.2, Trường Chinh, Phường THT, Q.12, TP.HCM
Điện thoại: (08) 3897 3268 Fax : (08) 3897 3268
Hotline: 0909.452.128 - 0976.561.839 (Mr.Hiệp)
Website: <http://cvtech.com.vn>
Email: cvtechco@gmail.com
nguyenhiiep22101983@gmail.com

CONTACT US:

CVTECH TECHNOLOGY CORPORATION

Add: 135/9 Group 14, Quarter 2, Truong Chinh Street, Tan Hung Thuan Ward,
District 12, Ho Chi Minh City, Vietnam

Web: www.cvtech.com.vn

Email: nguyenhiiep22101983@gmail.com

Tax code: 0314225163 - **Hotline:** +84 909 452 128